

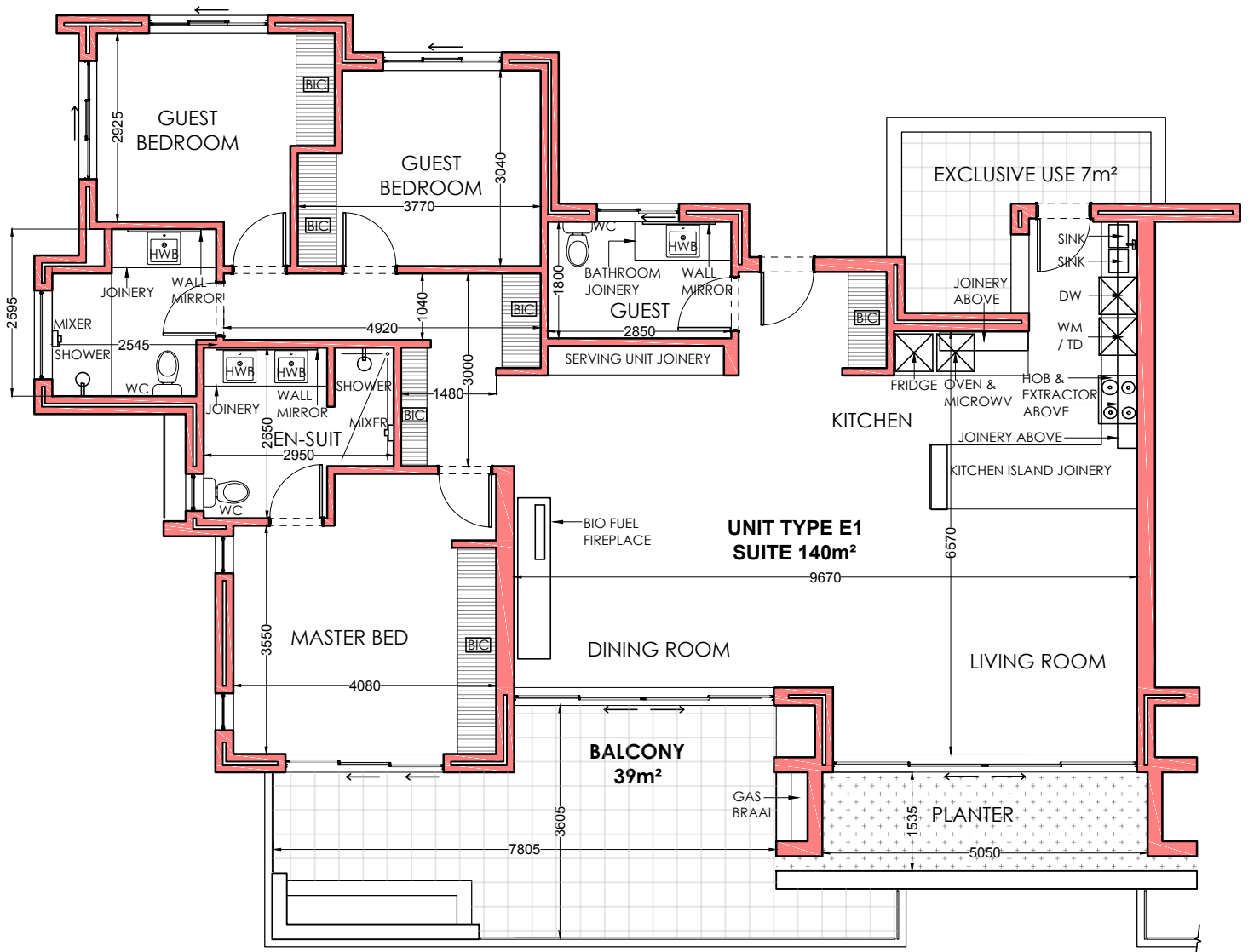
HARBOUR BAY VILLAGE THE MARINER



HARBOUR BAY

VILLAGE
EXCLUSIVE RETIREMENT LIVING

TYPICAL UNIT LAYOUT TYPE E1



UNIT TYPE E1 - TYPICAL DETAILS

Bedrooms: 3, Bathrooms: 2.5, Parking Bay: 2, Store: 1
Suite Size: 140m², Balcony: 39m², Exclusive Use: 7m², Total: 186m²