

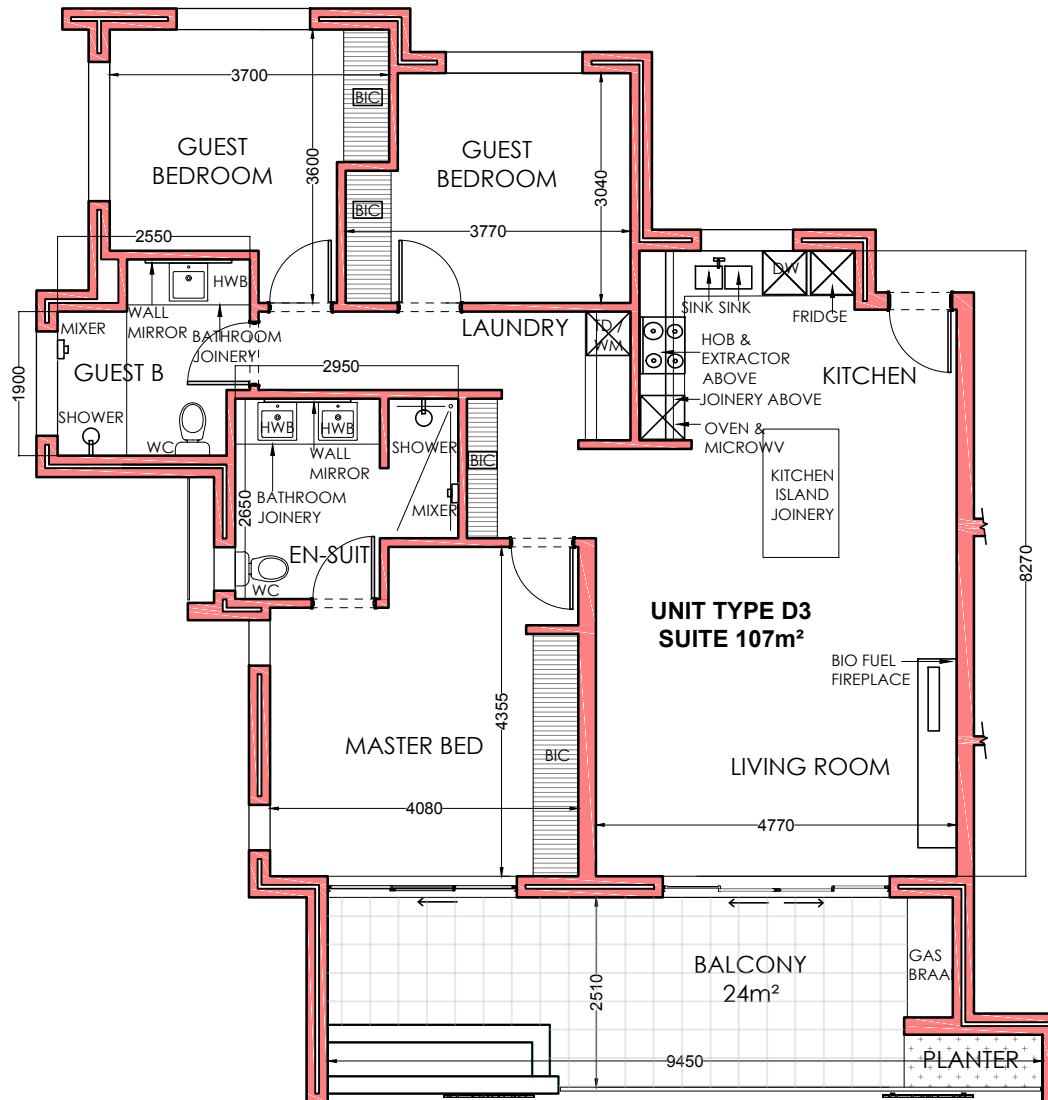
HARBOUR BAY VILLAGE THE MARINER



HARBOUR BAY

VILLAGE
EXCLUSIVE RETIREMENT LIVING

TYPICAL UNIT LAYOUT TYPE D3



UNIT TYPE D3 - TYPICAL DETAILS

Bedrooms: 3 , Bathrooms: 2 , Parking Bay: 2 , Store: 1
Suite Size: 107m², Balcony Size: 24m², Total: 131m²