

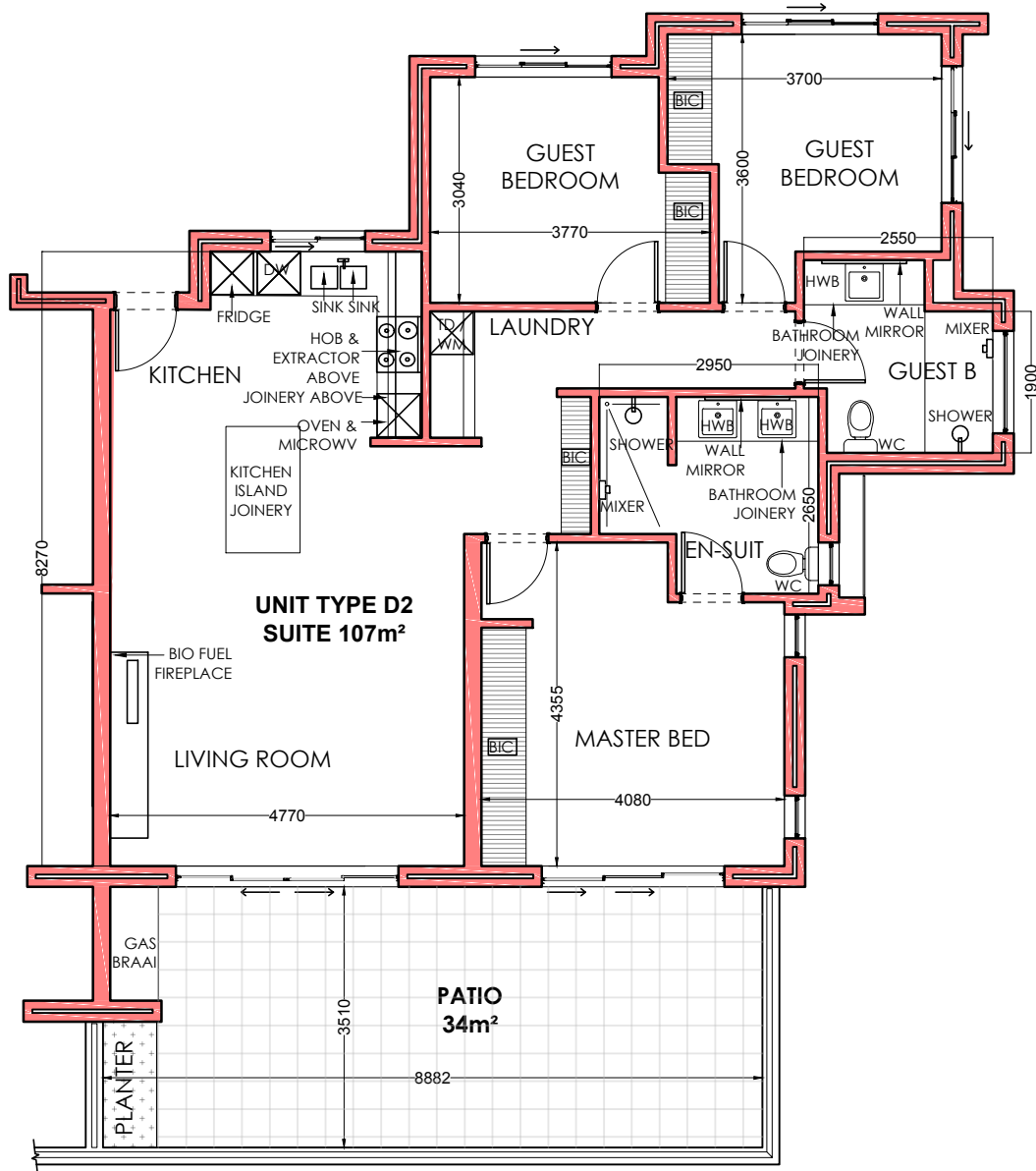
HARBOUR BAY VILLAGE THE MARINER



HARBOUR BAY

VILLAGE
EXCLUSIVE RETIREMENT LIVING

TYPICAL UNIT LAYOUT TYPE D2



UNIT TYPE D2 - TYPICAL DETAILS

Bedrooms: 3 , Bathrooms: 2 , Parking Bay: 2 , Store: 1
Suite Size: 107m², Patio Size: 34m², Total: 141m²