

HARBOUR BAY VILLAGE

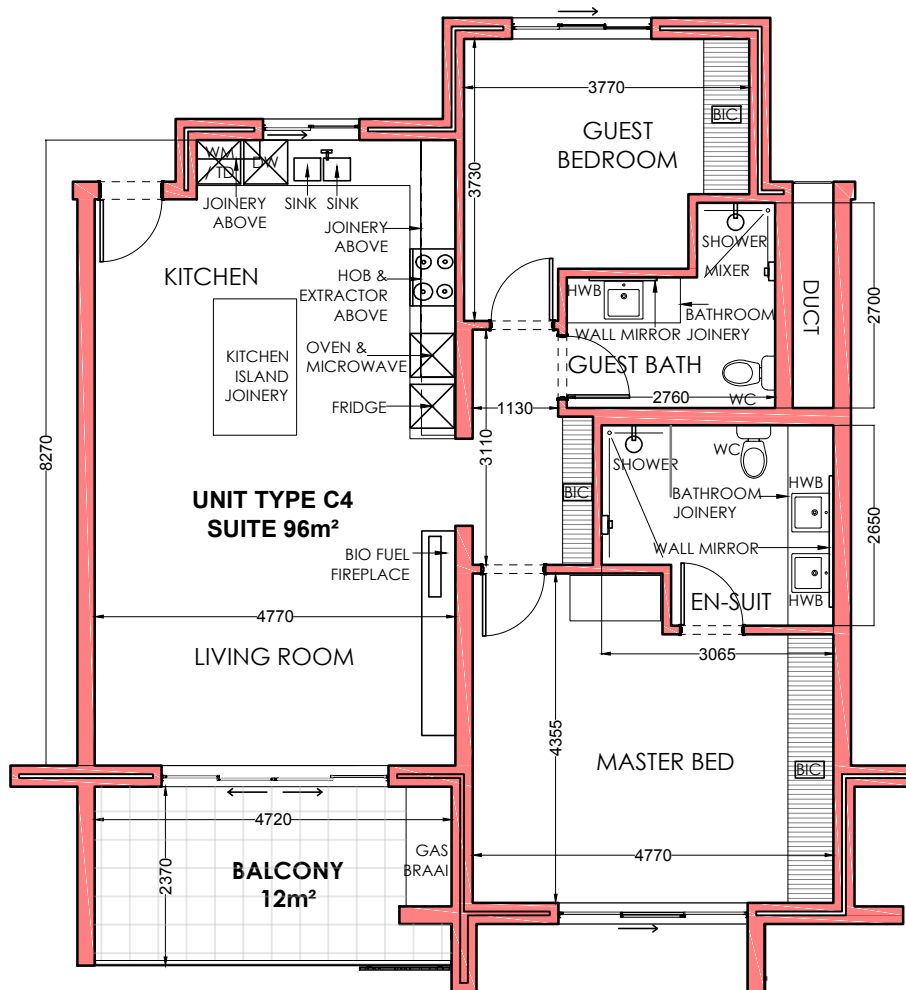
THE MARINER



HARBOUR BAY

VILLAGE
EXCLUSIVE RETIREMENT LIVING

TYPICAL UNIT LAYOUT TYPE C4



UNIT TYPE C4 - TYPICAL DETAILS

Bedrooms: 2 , Bathrooms: 2 , Parking Bay: 2
Suite Size: 96m², Balcony: 12m² , Total: 108m²